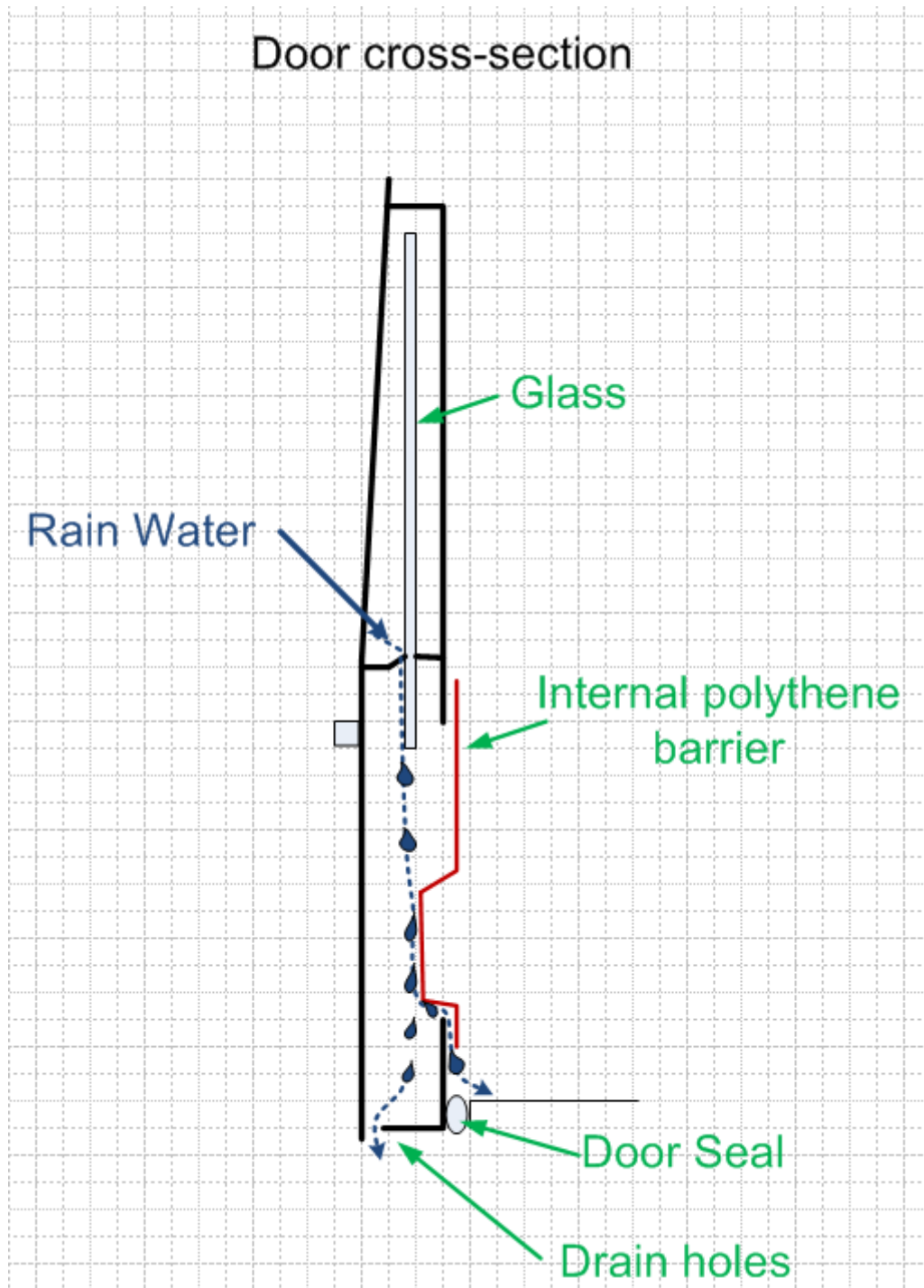
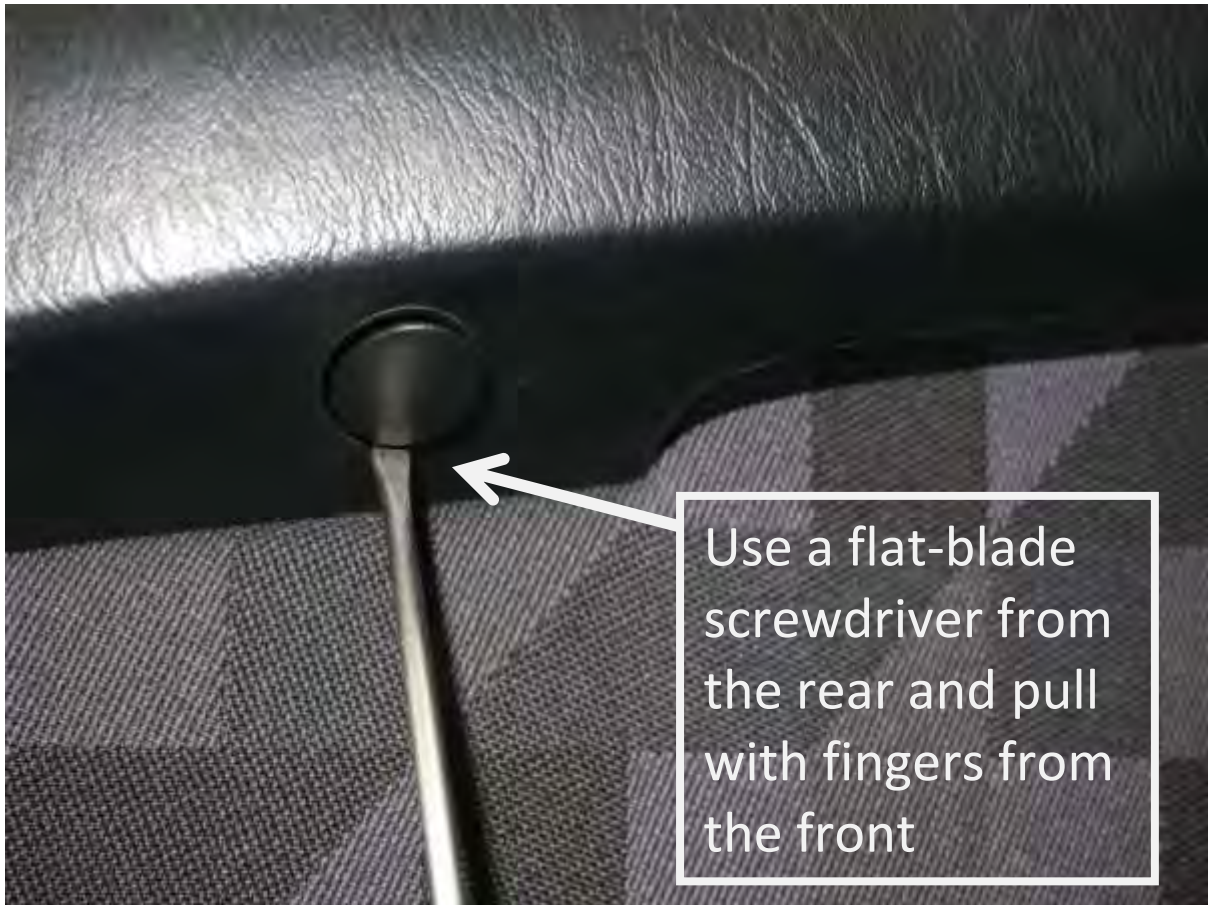


G-Wagen, W463, Water in Front Footwell Repair



If the internal polythene sheet has become dis-attached from the door surround, water will enter the car







Slide door-release surround in the direction of the rear of the car to release







Unscrew the 2 large Philips screws which retain the door handle



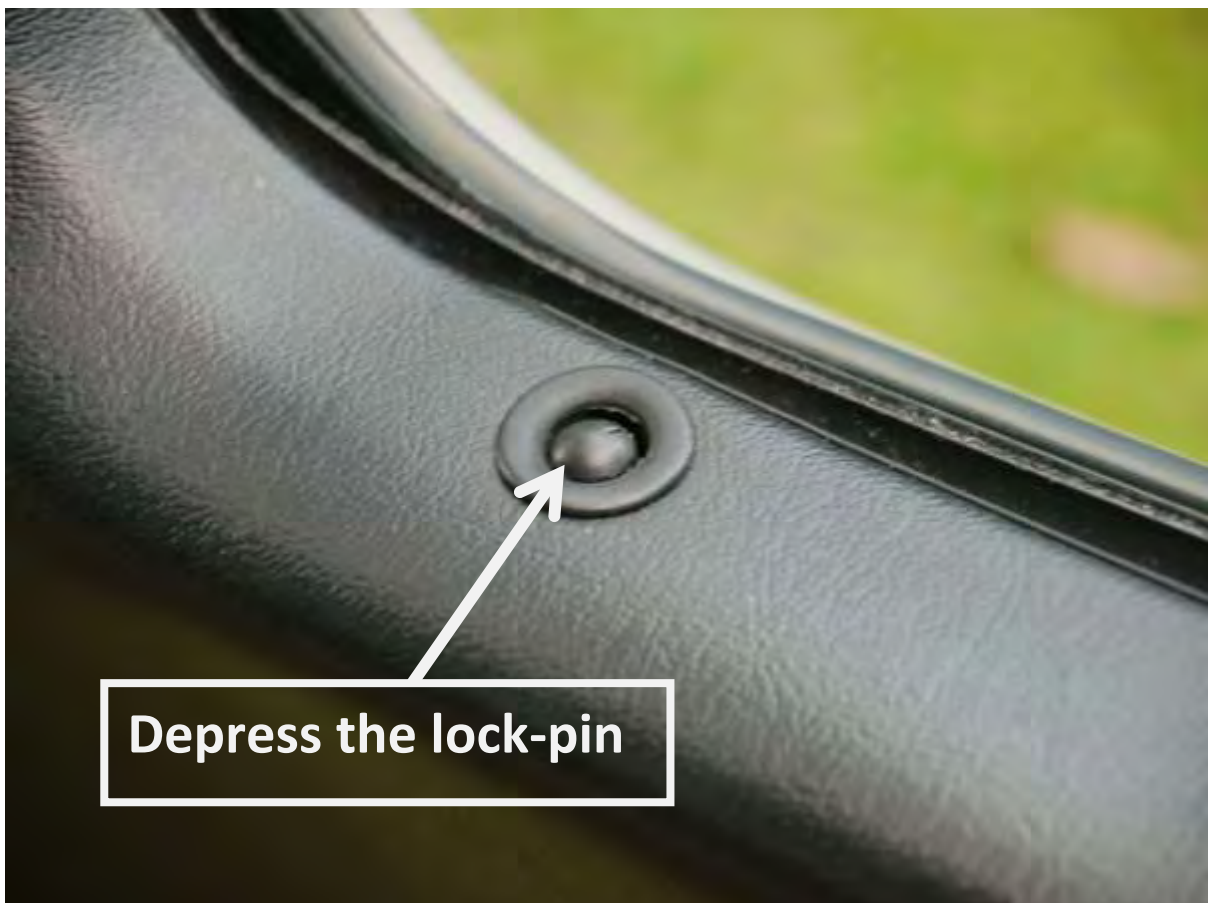
The wood trim is held by two fragile plastic pins- one at each end. Lever gently with a soft tool

Carefully remove the wood trim by levering it gently, directly outwards. Behind it lies the 3rd screw for the door handle. Remove it.

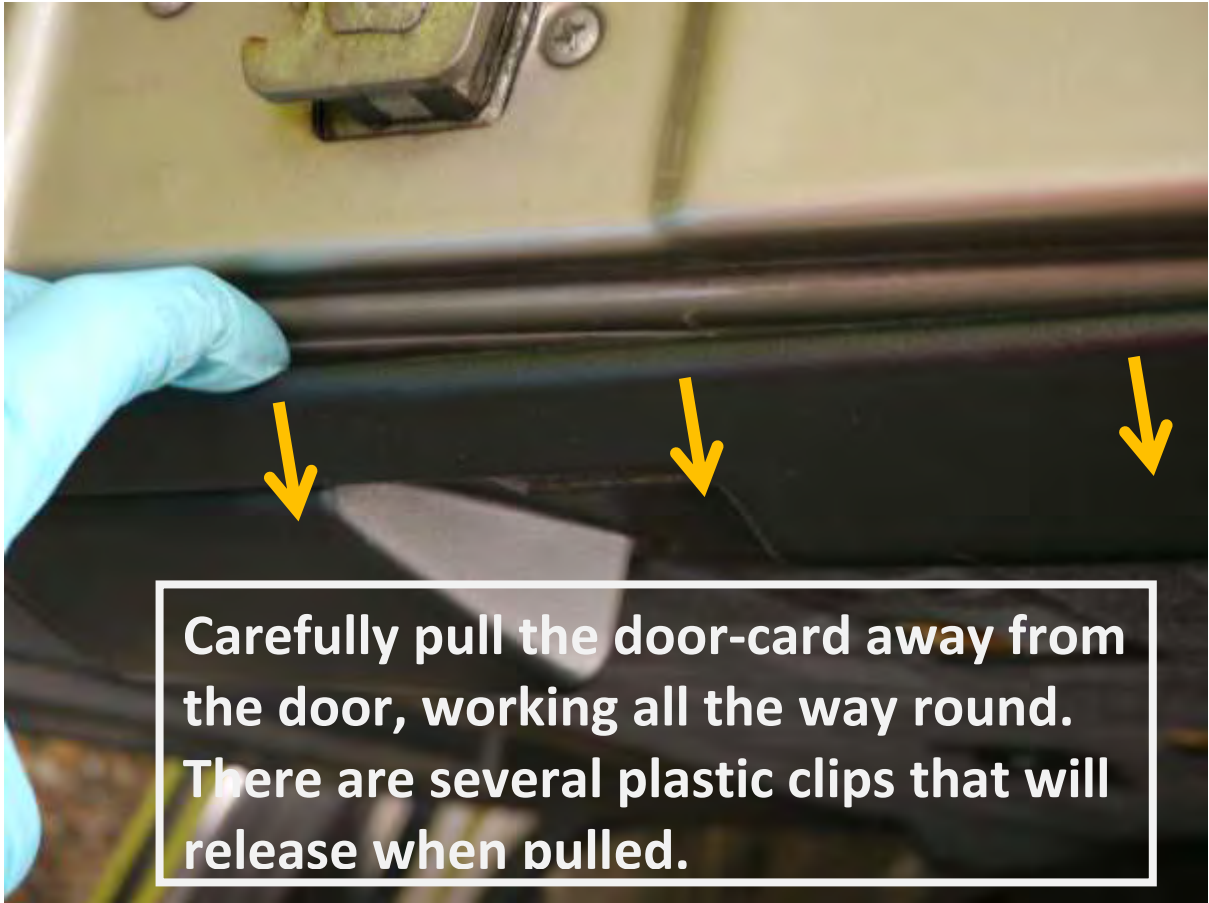




Rotate the door catch



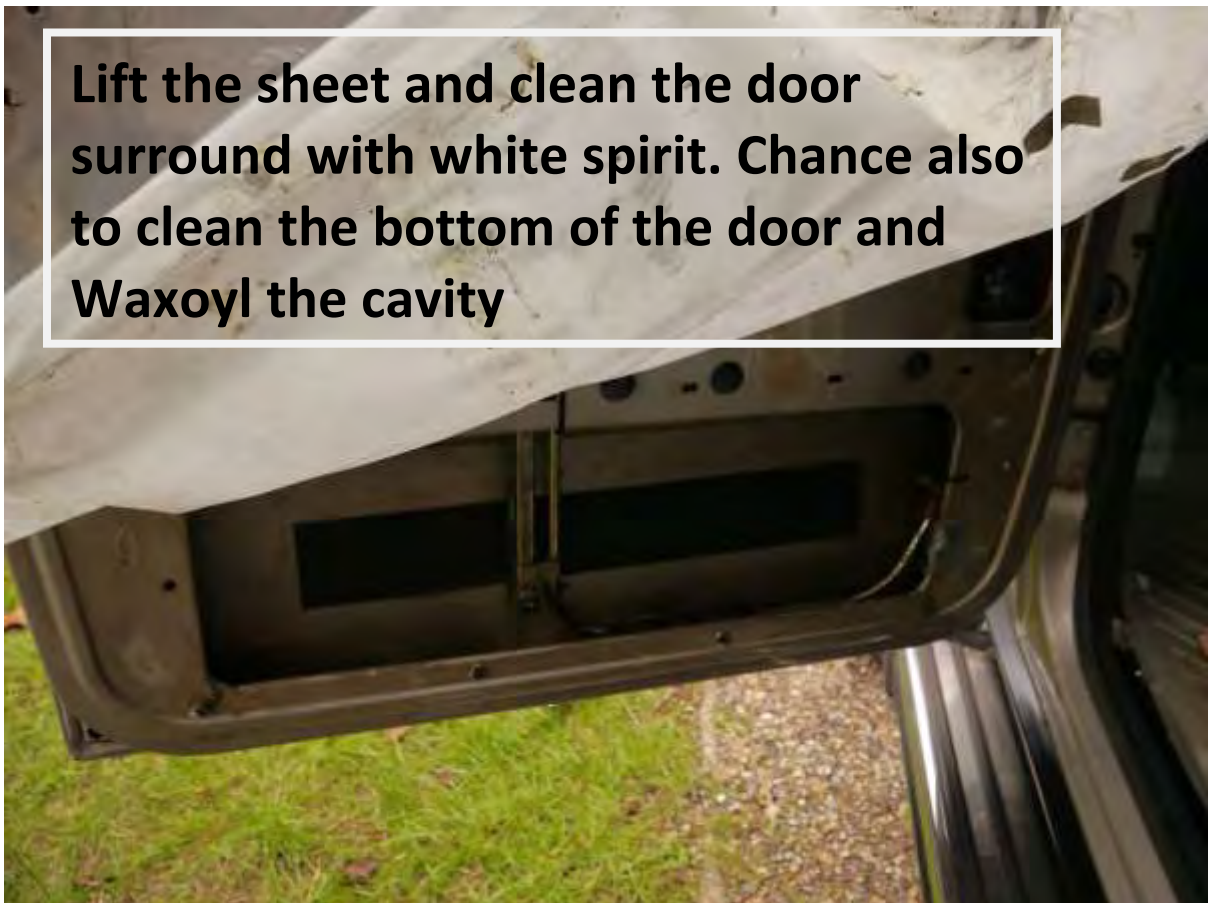
Depress the lock-pin

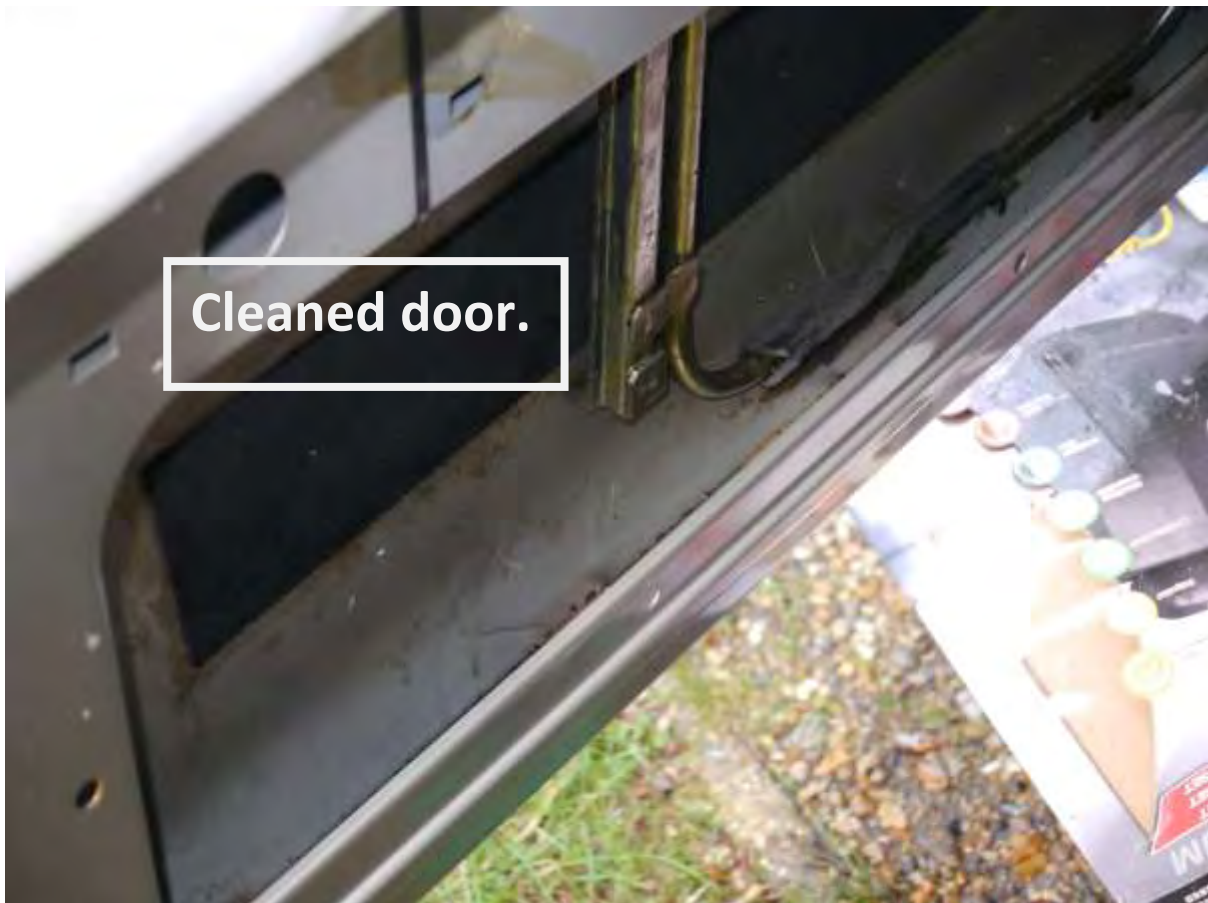


Check for any holes in the plastic sheet



Lift the sheet and clean the door surround with white spirit. Chance also to clean the bottom of the door and Waxoyl the cavity







Now, replace parts on reverse order.